



# **BUILDING SOLUTIONS**



## Company Profile + Core Values

Projexasia is a client-focused Main Contractor with broad Management Contracting Skills. We are a one-stop, front-to-back resource for clients who demand the highest construction standards — and share our commitment to the highest ethical standards.

We are driven by our conviction that every project — whether an interior renovation or a multi-hectare, mixed-use greenfield development — begins with mutual respect, is nourished and driven forward by collaboration and lays the foundation for a long-term relationship.

Only a seamless pathway from inspiration to implementation allows the collaboration essential to project success. At Projexasia, there are no barriers between design and construction. This holistic approach has won us the privilege of leading some of Hong Kong's and the region's highest-profile projects.

Meeting our and our clients' rigorous standards are a team of the region's most exceptional professionals. Their experience turns what would be a "special" project in another firm into a familiar one to us, and makes what would challenge another firm routine for us.

Projexasia is a Registered General Building Contractor (RGBC) under the Building Ordinance.

## Scope of Projects

**Residential** From design and construction to interior renovation, Projexasia have experience with a wide range of residential projects. Our global procurement capabilities give us special expertise in achieving high quality at low cost.

**Commercial** It's not only time that is money — it's also commitment and expertise. We are often praised by commercial clients for leveraging all three to achieve outstanding results — which is why many clients request our early involvement in planning, design and subsequent project phases.

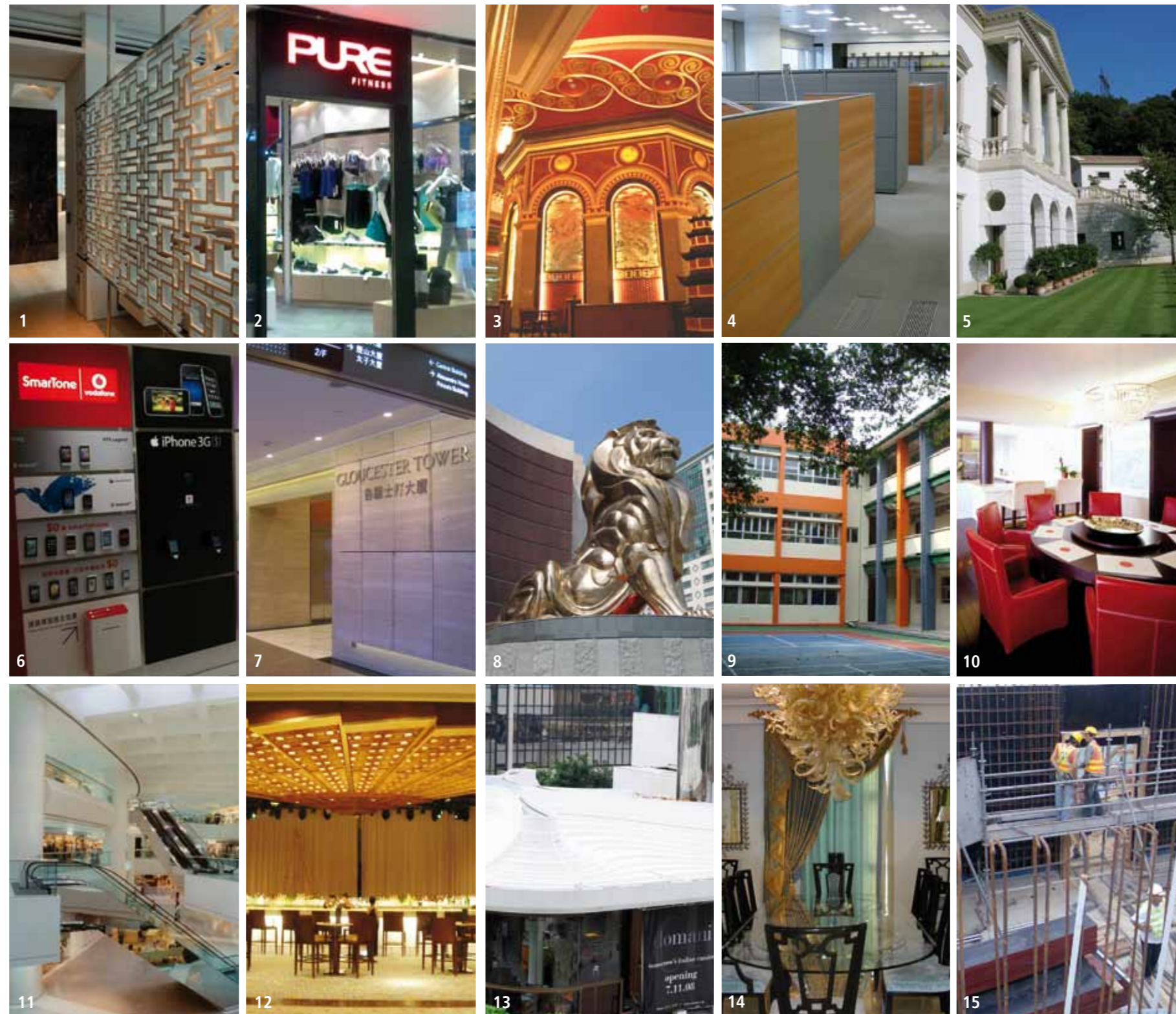
**Institution and Education** Today's limited budgets, tight design parameters and elaborate accountability systems have led to hyperfocus on risk management. We understand — and ensure that plans are comprehensive, processes are transparent and clients' sector-specific needs are met.

**Hotels and Spas** In no other industry can operational (e.g., kitchen layout) and aesthetic (e.g., guestroom fabrics) design be such potent competitive advantages. Involving Projexasia prior to the design process leverages our knowledge of success factors elsewhere in the region and ensures our management of procurement for optimum results.

### Retail Shops and Restaurants

As in the hotel/spa sector, retail shops and restaurants must entice potential customers with inventive design and meet their needs with efficient functionality. Our efforts in this sector take the high cost of client overhead fully into account—we do everything possible to keep downtime to an absolute minimum. When innovation is needed, we can deliver the expertise required, no matter how specialized or urgent.

**New Projects** Our expertise is not limited to our own commissions. Before joining us, our professionals all contributed to—and bring us learning from—every imaginable type of project. Our management practices are just as broadly informed. These collective experiences are the solid foundation from which we embrace new project types, new locations and new technologies.



1 Major renovation of luxury apartment at Flat 75A & B Harbourside, Hong Kong—designed by KplusK associates 2 Renovation of Pure Fitness retail outlet, at IFC Shopping Mall, Hong Kong 3 Fit-out of the Red Dragon Lounge, at the Venetian casino, Cotai, Macau 4 Fit-out of Search Group Head Office, Central, Hong Kong 5 Construction of new house at 22 Middle Gap Road, The Peak, Hong Kong 6 Roll-out fit-out of SmarTone Vodafone retail shops throughout Hong Kong and Kowloon 7 Major refurbishment of Hongkong Land's Gloucester Tower property, including the renovation of lift lobbies on 44 floors, and all lift cabs - designed by Aedas 8 Fabrication and installation of an 11-metre high bronze lion at MGM casino, Macau 9 Fast-track conversion of abandoned Hong Kong government school at Sha Tau Kok into an International College 10 Major refurbishment of a residence at 38 Mount Kellet Road, The Peak, Hong Kong 11 Installation of escalators at Swire's Pacific Place shopping mall, in Central, Hong Kong 12 Fit-out of 'high-roller' Bellini lounge, at the Venetian casino, Cotai, Macau - designed by Aedas 13 Acting as RGBC for Alteration and Addition works for Swire's Pacific Place restaurant adjacent to Pacific Place One, Central Hong Kong - designed by Wong & Ouyang 14 Major refurbishment of Flat 3, 27 Barker Road, The Peak, Hong Kong 15 Acting as RGBC for the construction of new building for a Hong Kong theme park cast breakroom and restroom

## Scope of Services

### Consultation Services

Feasibility Studies  
Buildability  
Development Advice  
Value Engineering  
Site Survey  
Shop Drawing Production  
LEED & HKBEAM

### Project Services

Main Contracting  
Project Management  
Management Contracting  
Construction Management  
Interior Fit-out  
Design and Build  
M&E Installation  
Alteration & Addition Works  
Maintenance and Renovation

### Sectors

Residential  
Commercial  
Institution and Education  
Hotel and Spas  
Retail Shops and Restaurants  
Industrial  
Entertainment  
Property Maintenance

## Certifications and awards

- Registered General Building Contractor (RGBC)
- Group A Contractor for Public Works
- ISO9001 Quality Management System (QMS)
- ISO14001 Environmental Management System (EMS)
- OHSAS18001 Occupational Health and Safety Management System (OHSMS)
- Integrated Management System (IMS)
- Wastewi\$e Label - Since 2007
- Energywi\$e Label - Since 2009
- Outstanding Employees in OSH (Construction Industry)
- OSHC Safety Performance Award
- OSHC Occupational Health Promotional Award
- HKAAE Construction Industry (SME Award)
- HSBC Living Business Green Project Award
- Hong Kong Green Council Construction Industry SME Award



## OUR BUSINESS PARTNERS

THE AMERICAN CLUB  
AEDAS  
BALENCIAGA  
BODUM EXPORT LTD.  
BRITISH CONSULATE GENERAL  
CHUNG NAM WATCH CO.  
CONSULATE GENERAL OF CANADA  
CROSBY CAPTAL PARTNER (HK) LTD.  
EASTPOINT PROPERTY MANAGEMENT LTD.  
ENGLISH SCHOOLS FOUNDATION  
FOSTER AND PARTNERS  
FUNG SAU PROPERTY CO. LTD.  
GAMMON CONSTRUCTION LTD.  
GATE LAND LTD.  
GENTLEMEN'S TONIC  
HEALTHWORKS (HERBAL TEA) CO. LTD.  
HEBE HAVEN YACHT CLUB LTD.  
HIP HING ENGINEERING ( MACAU ) CO. LTD.  
HONG LOK YUEN INTERNATIONAL SCHOOL  
HUNG HING OFF-SET PRINTING CO. LTD.  
INTERNATIONAL COLLEGE HONG KONG LTD.  
IFC MANAGEMENT CO. LTD.  
INARC DESIGN HONG KONG LTD.  
IOC WING ON VILLAS  
KELLETT ESTATES LTD.  
KOHN PEDERSEN FOX ASSOCIATES PC  
KPLUSK ASSOCIATES  
KOWLOON TONG CLUB  
LEIGHTON ASIA LTD.  
WEIR & ASSOCIATES  
MACAU LANDMARK  
MANDARIN HOTEL  
MAP ARCHITECTURE & PLANNING LTD.  
MATILDA HOSPITAL  
MAUNSELL  
MEINHARDT  
MOUNTAIN GROUP LTD.  
MUSTANG JEANS HONG KONG LTD.  
NATASHA USHER DESIGN ENTERPRISE  
OCEAN PARK CORPORATION  
ORIGINAL VISION LTD.  
PRESS ROOM GROUP  
PURE GROUP  
ROYAL HONG KONG YACHT CLUB  
S&P ASSET MANAGEMENT (HK) LTD.  
SEARCH GROUP LTD.  
SCOTT WILSON LTD.  
SMARTONE MOBILE COMMUNICATIONS LTD.  
SQUINA COSMETICS Co. LTD.  
STARFORM SERVICES LTD.  
SWIRE PROPERTIES MANAGEMENT LTD.  
TAK SING INVESTMENT Co. LTD.  
THE HONGKONG LAND PROPERTY Co. LTD.  
THE HONG KONG JOCKY CLUB  
VENETIAN COTAI LTD.  
VICEBON LTD.  
WALT DISNEY IMAGINEERING HONG KONG  
WONG & OUYANG  
WONG PAK LAM  
WHAMPOA PROPERTY MANAGEMENT LTD.



PROJEXASIA

Main Contracting | Construction Management

**SINCE  
2001**

PROJEXASIA LIMITED

2/F, Chung Nam Building,  
1 Lockhart Road,  
Wanchai, Hong Kong.  
+ 852 2866 3007 tel  
+ 852 2866 3211 fax

[www.projexasia.com](http://www.projexasia.com)

Contact

[projexasia@projexasia.com](mailto:projexasia@projexasia.com)

Steve GRANT    [sjgrant@projexasia.com](mailto:sjgrant@projexasia.com)